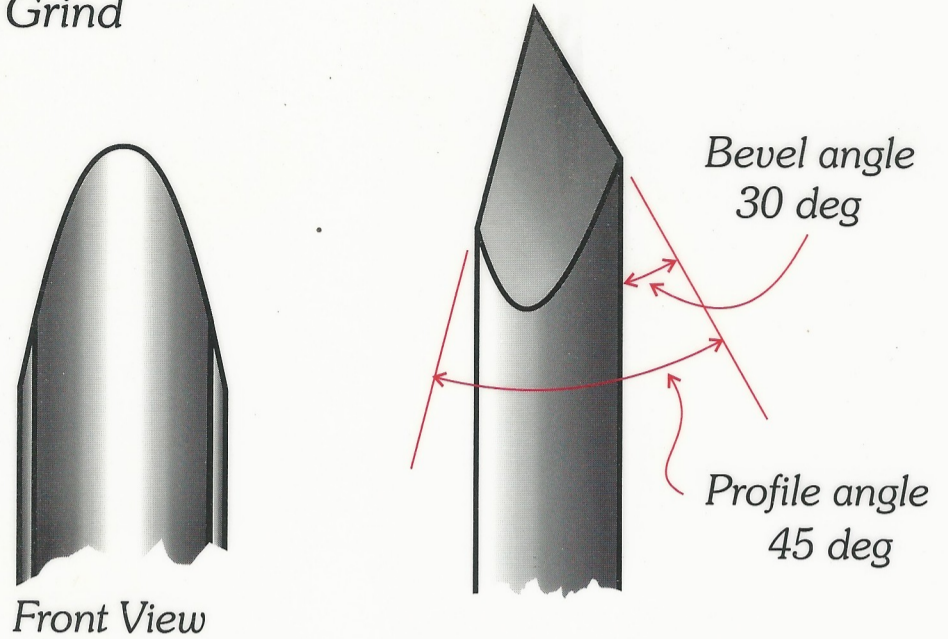
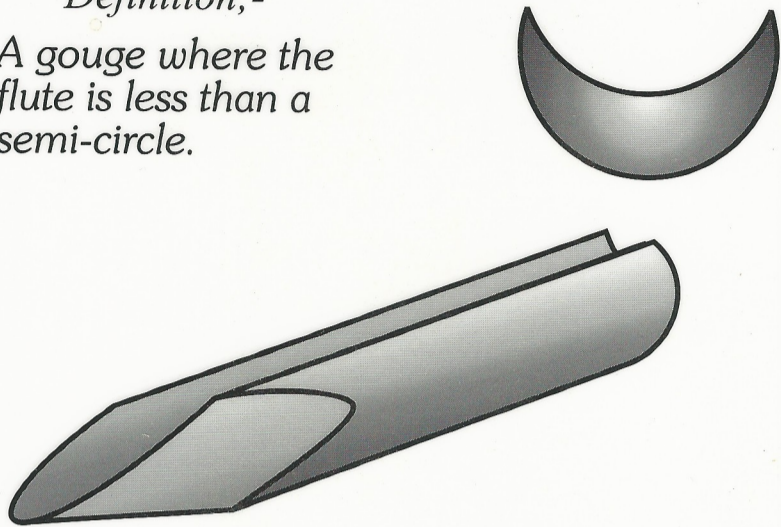


**TOOLS OF THE TRADE - GOUGES**

**SHALLOW FLUTED GOUGE**

Detail Grind

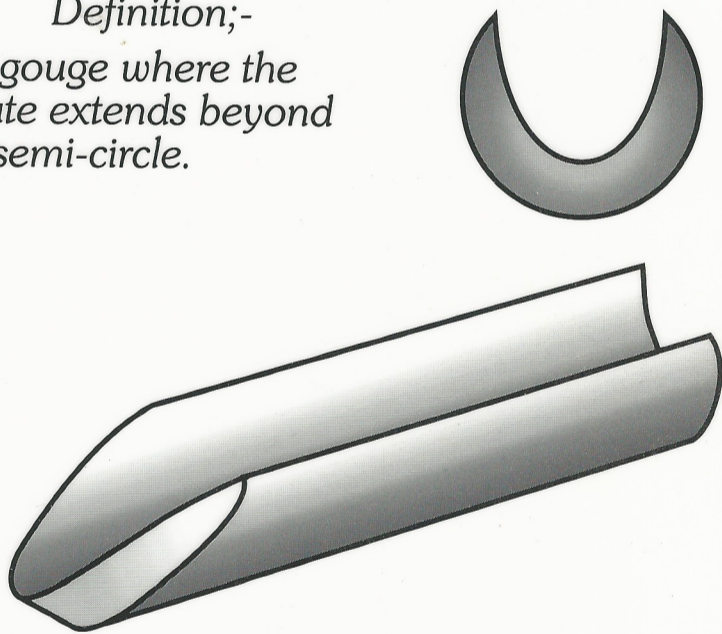
Definition;-  
A gouge where the  
flute is less than a  
semi-circle.



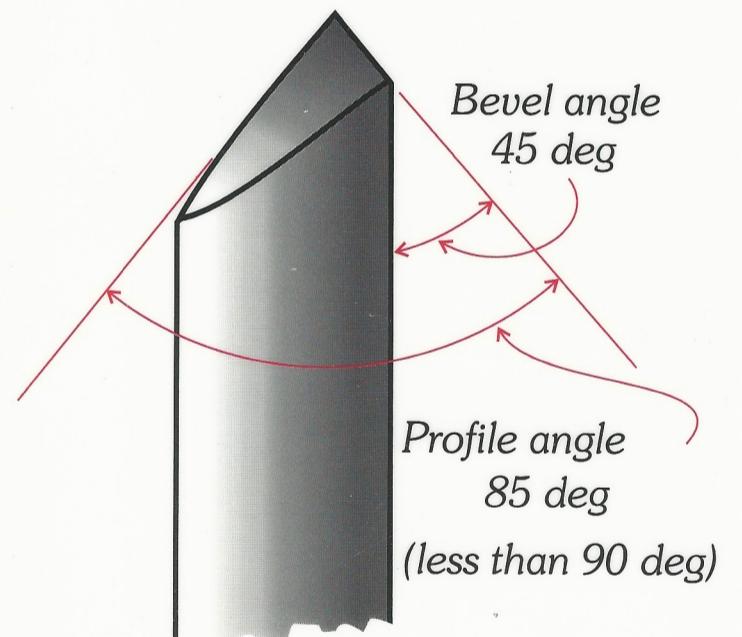
**DEEP FLUTED GOUGE**

The "O'Donnell Grind"

Definition;-  
A gouge where the  
flute extends beyond  
a semi-circle.

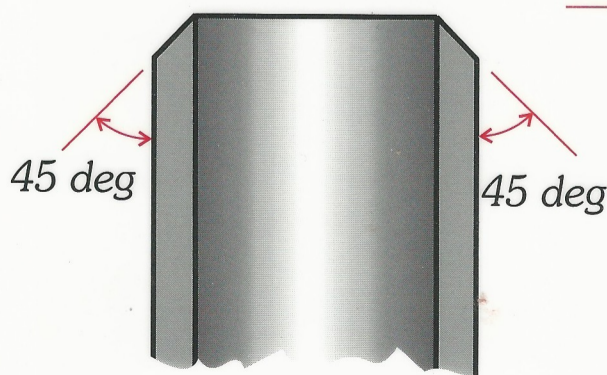
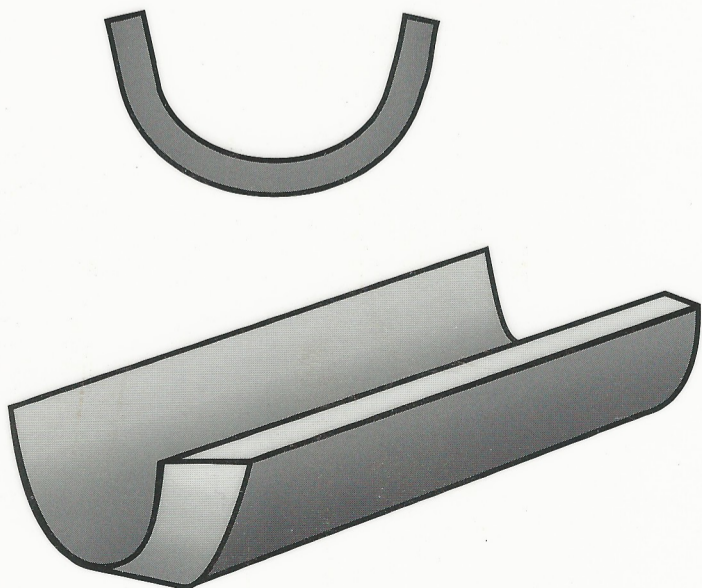


Front View



**SPINDLE ROUGHING GOUGE**

Roughing Grind.



Front view

